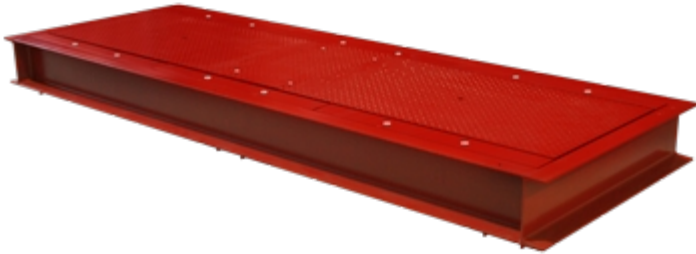


## RWSCP

RWSCP: PLATFORM FOR DYNAMIC WEIGHING OF THE VEHICLE AXLES



Reinforced platform which allows you to calculate the weight of a vehicle in transit, summing the various axles, weighed dynamically. Designed for a flush floor installation.

The best solution  
for advanced industrial  
applications

## TECHNICAL FEATURES

- Sturdy loading surface in striated sheet steel, sized to withstand any load on the basis of the parameters dictated by the 96/53/EEC directive (maximum load on single axle for the vehicles transiting in Europe).
- Frame for the containment of RWSCP platform, made up of a single bearing structure, in welded painted steel, that does not require assembly. It facilitates the installation of the scale and simplifies the masonry.
- Sandblasting and varnishing with bi-component epoxy coating, highly resistant to corrosion.
- Dimensions of the load surface (lxw): 3 x 0,73 m.
- 6 compression load cells, C4 class, stainless steel IP68.
- 20m cable for the connection to the weight indicator.
- Dust and waterproof wirings and connections, easy to connect and disconnect.
- Hermetic junction box.
- Central inspected trapdoors for the ordinary maintenance.
- Wide range of connectable weight indicators, also functioning with rechargeable battery, which allow to use the platform also without an electrical power supply.
- Maximum speed of transit: 5km/h.
- Accuracy 1% for internal use, 2% for legal for trade use (\* OIML R134 CERTIFICATION).  
This kind of accuracy is obtainable by following the instructions in the installation manual.

## (\* OIML R134 CERTIFICATION

- The RWSCP20T platform combined with a 3590E "AF09" indicator is OIML R134 certified for the dynamic vehicle weighing, according to the legal standards in force in the Country of use

## 3590E "AF09" SERIES WEIGHT INDICATOR

- The 3590E weight indicator, in "AF09" version, is suitable for creating dynamic vehicle weighing systems.  
The indicator has two available functioning modes:
  - Checking the weight of the vehicle with printing of the axle and the total weighs.
  - Axle totalisation with input/output function, with storage of the input weighs through ID CODE or VEHICLE PLATE.2 digital, programmable inputs and 4 output are available as standard fitted, to create automations, or pilot bars, control light, etc.

## DETAIL 1



RWSCP: installation example, with a well leveled concrete surface.

## DETAIL 2



3590EPXP: indicator for dynamic axle weighing, with printer (to be combined to the optional AF09 software)

## VERSIONS

### Versioni disponibili

Codice	l x w x h (mm)	N° celle	Max (kg)	d (kg)
RWSCP20T	3000x730	6 x 5000kg	20000	5
RWSCP40T	3000x730	6 x 10000kg	40000	10
RWSCP50T	3000x730	6 x 12500kg	50000	20

**COVENTRY SCALE COMPANY**



COVENTRY SCALE COMPANY LTD

BARKERS BUTTS LANE 137 - CV61EB - COVENTRY - UNITED KINGDOM

Tel. 0044-2476-593500

Fax. 044-2476-601239

E-mail [info@coventryscale.co.uk](mailto:info@coventryscale.co.uk)

Web [www.coventryscale.co.uk](http://www.coventryscale.co.uk)