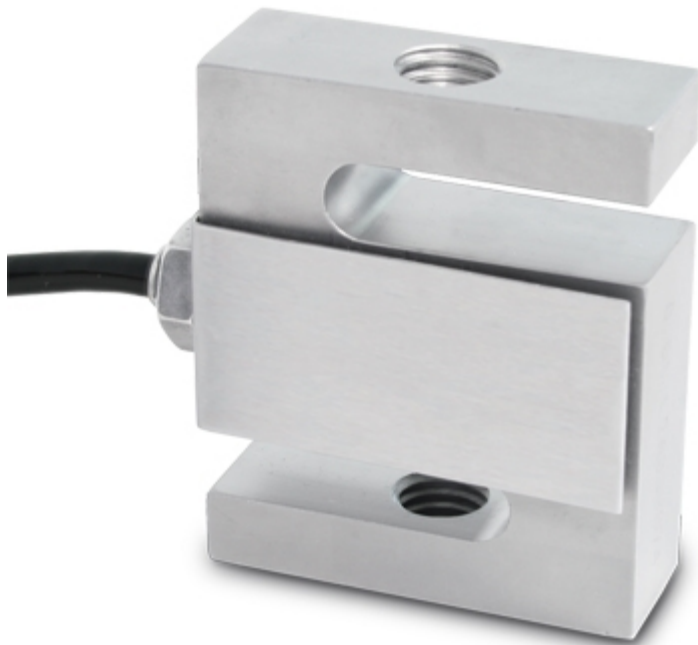


## STG

### STG SERIES TENSION LOAD CELLS



Tension or Compression approved load cells for the weighing hoppers, tanks, scales with levers, and with other weighing devices.

---

CAPACITIES (kg): 100, 500, 1000.

---

OIML R60. C3 precision class.

---

17-4 PH stainless steel. IP67 protection.

---

The best solution  
for advanced industrial  
applications

## MAIN FEATURES

- C3 PRECISION CLASS
- 17-4 PH STAINLESS STEEL CONSTRUCTION
- IP67 PROTECTION
- MAX. CAPACITIES FROM 100 TO 1000 kg
- SHIELDED CONNECTION CABLE
- TEST CERTIFICATE AVAILABLE UPON REQUEST

## TECHNICAL FEATURES

- Minimum load cell verification interval:  
 $V_{min} = E_{Max} / 10.000$  (for STG500 and STG1000 model);  
 $V_{min} = E_{Max} / 7.000$  (for STG100 model)
- Maximum number of verification intervals:  $n_{LC} = 3000$
- Combined error 0,03% of Full Scale Output (F.S.)
- Non-Repeatability: 0,01% F.S.
- Full Scale Output: 3mV/V +/- 0,08%
- Temperature effect on zero: 0,017% /°C
- Temperature effect on full scale output: 0,014% /°C
- Compensated Temperature Range: -10°C/+40°C
- Operating Temperature Range: -35°C/+65°C
- Creep error after 30 minutes: 0,02% F.S.
- Maximum tolerated excitation voltage: 18 VDC
- Input Resistance:  $430 \pm 60$  Ohm
- Output Resistance:  $350 \pm 3.5$  Ohm
- Zero balance: +/-1% F.S.
- Insulation Resistance: >5000 MOhm
- Safe Overload: 150% F.S.
- Ultimate Overload: 300% F.S.
- 4-wire shielded cable, 6m long, 5 mm diameter

## ATEX VERSION

- The CCATEX certificate makes the load cell suitable for use in hazardous areas with protection methods according to:  
ATEX II 1G Ex ia IIC T6 (Ta -20÷+40°C) TX (Ta -20÷+65°C) Ga  
ATEX II 1D Ex ta IIIC TX°C (Ta -20÷+40°C) TX°C (Ta -20÷+65°C) Da IP65.  
The certificate includes the manual and the ATEX CE conformity declaration (available in EN, DE, FR, and IT).
- **IMPORTANT:** the certificate refers to the single load cell. For systems with more load cells, it is necessary to order one certificate for each load cell.

## DETAIL 1



## VERSIONS

### Versioni disponibili

Codice	Max (kg)
STG100	100
STG500	500
STG1000	1000



www.diniargeo.com



“YOUR WORLDWIDE PARTNER FOR WEIGHING,”

DINI AR GEO  
FRANCE sarl  
Nogent-sur-Marne  
info.fr@diniargeo.com

DINI AR GEO  
GMBH  
Sinsheim - Germany  
info.de@diniargeo.com

DINI AR GEO  
UK Ltd  
Taunton - United Kingdom  
info.uk@diniargeo.com

DINI AR GEO WEIGHING  
INSTRUMENTS Ltd  
Shanghai - China  
info.cn@diniargeo.com

DINI AR GEO  
WEIGHBRIDGES  
Calto (RO) – Italy  
info@diniargeo.com

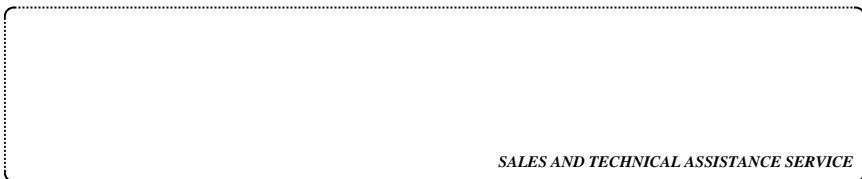


**HEAD OFFICE**

Via Della Fisica, 20  
41042 Spezzano di Fiorano Modena - Italy  
Tel. +39.0536 843418 Fax. +39.0536 843521  
info@diniargeo.com

**SERVICE ASSISTANCE**

Via Dell'Elettronica, 15  
41042 Spezzano di Fiorano Modena - Italy  
Tel. +39.0536 921784 Fax. +39.0536 926654  
service@diniargeo.com



SALES AND TECHNICAL ASSISTANCE SERVICE

All the specifications and images can be subject to variations and upgrades without prior notice.