

## FXC\_C6

"FXC C6" SERIES: BENDING BEAM LOAD CELLS, C6 CLASS



Bending beam load cells for approved weighing, automatic systems, dosage.

---

**CAPACITIES (kg):** 20, 50, 100, 200.

---

**OIML R60. C6** precision class.

---

**Stainless steel. IP68** protection.

---

The best solution  
for advanced industrial  
applications

## MAIN FEATURES

- C6 PRECISION CLASS
- STAINLESS STEEL
- IP68 PROTECTION
- MAX. CAPACITIES FROM 20 TO 200 kg
- SHIELDED CONNECTION CABLE
- OIML CERTIFICATE AVAILABLE UPON REQUEST
- TEST CERTIFICATE AVAILABLE UPON REQUEST

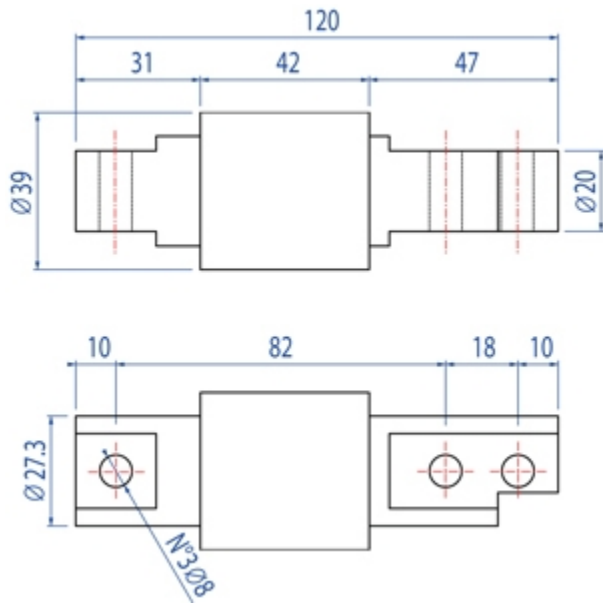
## TECHNICAL FEATURES

- Minimum load cell verification interval:  $V_{min} = E_{Max} / 10.000$
- Maximum number of verification intervals:  $nLC = 6000$
- Full Scale Output:  $2mV/V \pm 0,1\%$
- Combined error: 0,008% of Full Scale Output (F.S.)
- Temperature effect on zero:  $\pm 0,0014\% / ^\circ C$
- Temperature effect on full scale output:  $\pm 0,0007\% / ^\circ C$
- Compensated Temperature Range:  $-10^\circ C / +40^\circ C$
- Operating Temperature Range:  $-20^\circ C / +60^\circ C$
- Creep error after 30 minutes  $\pm 0,012\%$  F.S.
- Maximum tolerated excitation voltage: 15 VDC
- Input Resistance:  $385 \pm 20$  Ohm
- Output Resistance:  $350 \pm 5$  Ohm
- Insulation Resistance:  $> 5000$  MOhm
- Safe Overload: 150% F.S.
- Ultimate Overload: 200% F.S.
- 4-wire shielded cable, 3m long.

## ATEX VERSION

- The CCATEX certificate makes the load cell suitable for use in hazardous areas with protection methods according to:  
ATEX II 1G Ex ia IIC T6 (Ta  $-20 \div +40^\circ C$ ) TX (Ta  $-20 \div +65^\circ C$ ) Ga  
ATEX II 1D Ex ta IIIC TX $^\circ C$  (Ta  $-20 \div +40^\circ C$ ) TX $^\circ C$  (Ta  $-20 \div +65^\circ C$ ) Da IP65.  
The certificate includes the manual and the ATEX CE conformity declaration (available in EN, DE, FR, and IT).
- **IMPORTANT:** the certificate refers to the single load cell. For systems with more load cells, it is necessary to order one certificate for each load cell.

## DETAIL 1



Dimensions (mm)

Wiring Code	
Colour	Function
--	SHIELD
BLACK	INPUT +
YELLOW	OUTPUT +
WHITE	OUTPUT -
GREEN	INPUT -

## VERSIONS

### Available versions

Codice	Max (kg)
FXC20C6	20
FXC50C6	50
FXC100C6	100
FXC200C6	200

**COVENTRY SCALE COMPANY**



COVENTRY SCALE COMPANY LTD

BARKERS BUTTS LANE 137 - CV61EB - COVENTRY - UNITED KINGDOM

Tel. 0044-2476-593500

Fax. 044-2476-601239

E-mail [info@coventryscale.co.uk](mailto:info@coventryscale.co.uk)

Web [www.coventryscale.co.uk](http://www.coventryscale.co.uk)