



GIROPES



G6M

SINGLE CELL

min 5 kg
max 40 kg

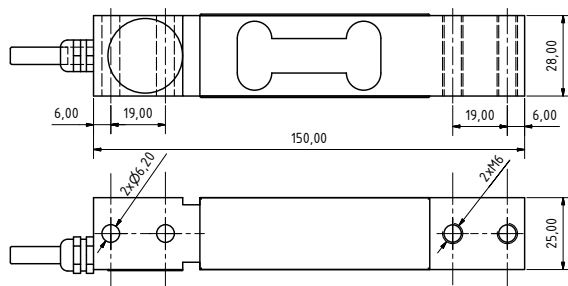


FEATURES

- Single load cell
- Shear beam load cell
- Low profile. Stainless steel building.
- 3000 divisions OIML R60 class C
- Direct assembly at platform.
- High accuracy with off-center loads
- Measurement element from alloy steel
- Protected against humidity IP66 (EN60529)

SPECIFICATIONS

Nominal capacities (Ln)	5-10-15-18-20-25-30-35-40 kg
Accuracy class	3000 n. OIML 6000 n. OIML
Minimum dead load	0 %Ln
Service load	150 %Ln
Safe load limit	200 %Ln
Maximum combined error	<± 0.017 %Sn
Repeatability error	<± 0.015 %Sn
Temperature effect on zero	<± 0.01 %Sn/5°C
Temperature effect on sensitivity	<± 0.006 %Sn/5°C
Creep error	<± 0.016 %Sn
Temperature compensation	-10.40 °C
Temperature limits	-20.50 °C
Nominal sensitivity	2±0.1% mV/V (2)
Nominal input voltage	10 V
Maximum input voltage	15 V
Input impedance	386±10% Ω
Output impedance	350±10% Ω
No load output(SN)	< ±2 %Sn
Insulation resistance	> 5000 MΩ
Maximum deflection	0.2-0.4 mm
Cable lenght	2 m



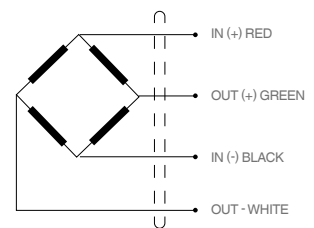
Dimensions (mm)

APPLICATIONS

Bench platform up to 400x400 mm.



ALLOWED FOR OFF-CENTER LOADS



CODE G6M

Reference	N. capacity - ln (kg)	Accuracy class n. OIML	y = emax / vmin	Platform	Code #
G6M-5	5	3000	7690	400 x 300	230665
G6M-10	10	3000	7690	300 x 400	230666
G6M-15	15	3000	7690	400 x 400	230667
G6M-18	18	6000	11500	400 x 400	230668
G6M-20	20	6000	11500	400 x 400	230669
G6M-25	25	6000	11500	400 x 400	230670
G6M-30	30	6000	11500	400 x 400	230671
G6M-35	35	6000	11500	400 x 400	230672
G6M-40	40	6000	11500	400 x 400	230673