



L6F

SINGLE CELL

min 250 kg
 max 750 kg

65 IP M

FEATURES

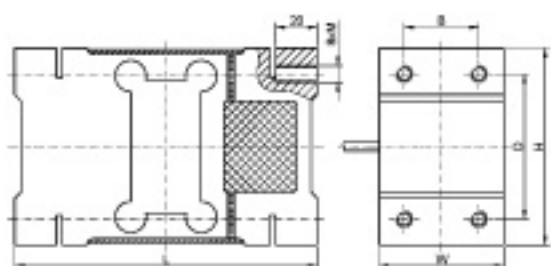
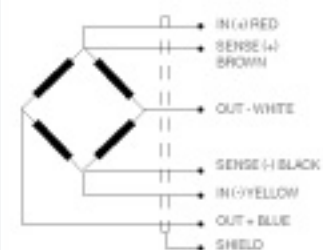
- Shear beam load cell
- Anodized aluminium construction, silicone sealing
- 3000 divisions OIML R60 class C
- Protection IP65
- High accuracy with off-center loads

SPECIFICATIONS

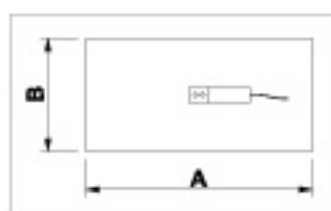
Nominal capacities (Ln)	250-500-750 kg
Accuracy class	C3 n. OIML
Output sensitivity	2.0 ± 0.2 mV/V
Maximum capacity	250-500-750 kg
Max number of load cell intervals	3000
Ratio of maximum capacity to min load cell verification interval	7000
Minimum dead load	0
Safe overload	150 % Emax
Excitation recommended	5 - 12 V
Excitation maximum	18 V
Zero balance	±2 % RO
Output resistance	400±6 Ω
Input impedance	350±3 Ω
Insulation impedance	≥5000 MΩ
Temperature range compensated	-10 - +40 °C
Temperature range operating	-35 - +65 °C
Atmospheric protection	IP65
Maximum dimension for the platform	600x800 (250-750 kg) mm 1200x1200 (750 kg) mm
Cable length	5 m

APPLICATIONS

- Bench platform up to 600 x 800 mm
- 1200 x 1200 mm
- Counting scale



Dimensions (mm)



Dimensions platforms (mm)

N. capacity	l	w	h	d	b	m	Transport weight	Platform A x B	Code #
250 - 500 kg	146	60	96	70	36	M12	2.5 kg	250 x 350 mm	230370 230371 230372 (a)
750 kg	176	76	125	96	46	M15	3 kg	1200 x 1200 mm	230387 (b)

CODE L6F

Reference	N. capacity - ln (kg)	Accuracy class n. OIML	y = emax / vmin	Code #
L6F-250	250	C3	7000	230370
L6F-500	500	C3	7000	230371
L6F-750 (a)	750	C3	7000	230372
L6F-750 (b)	750	C3	7000	230387